

R.J. Grey Junior High School

To: Glenn Brand
 From: Allison Warren and James Marcotte
 Re: Discipline Report for October 2014
 Date: November 5, 2014

There were 28 discipline referrals/concerns (including requests from teachers for assistance) reported to the Administration during the month of October. There was 1 suspension this past month.

	<u>Oct-10</u>	<u>Oct-11</u>	<u>Oct-12</u>	<u>Oct-13</u>	<u>Oct-14</u>
<i>Total Discipline Referrals Reported</i>	30	27	10	18	28

	<u>Oct-10</u>	<u>Oct-11</u>	<u>Oct-12</u>	<u>Oct-13</u>	<u>Oct-14</u>
Total Suspensions	2	2	0	3	1
Fighting					
Harassment (non-sexual)	1				
Inappropriate/disruptive/disrespectful behavior		1			
Physical aggression				1	
Sexual harassment		1			1
Stealing					
Truancy Issues					
Threatening Physical Attack	1				
Non-compliance with school rules				2	

	<u>Oct-10</u>	<u>Oct-11</u>	<u>Oct-12</u>	<u>Oct-13</u>	<u>Oct-14</u>
Total Other Infractions	28	25	10	15	28
Abusive language/profanity	1				
Academic Integrity	1				
Bus discipline	3	1	3	1	1
Class/school truancies			2		
Disruptive behavior (classroom, cafeteria, hallway)	11	6	1	11	12
Harassment (non-sexual)/bullying/teasing		2			1
Non-compliance with school rules	9	3		2	6
Other	2				
Physical aggression	1	2			1
Sexual harassment					

Tardy to class		3			1
Threatening					
Uncooperative/disrespectful behavior		8	4	1	5
Vandalism					

The referrals/concerns generally were quickly resolved and no further intervention was required.

Office of the Director of Curriculum and Assessment

Acton-Boxborough Regional School District
(978) 264-4700, x3213

<http://ab.mec.edu/curriculum/curriculum.shtml>

TO: Glenn Brand, Superintendent
FROM: Deborah Bookis, Director of Curriculum and Assessment
DATE: November 14, 2014
RE: Report on Professional Learning Day, November 6, 2014

The November 2014 Professional Learning Day was planned and organized by individual schools and/or departments to support the learning and work of their respective goals. Below are the Professional Learning Day summaries from the schools and departments of the Acton-Boxborough Regional School District.

Blanchard School: Submitted by Dana Labb

Our Professional Day at Blanchard was committed to continuing our work with our new math curriculum: Math In Focus. Specifically, we had three concurrent breakout sessions:

- MIF Training with the PD trainer Jo-Ann Feniger was based on instructional strategies. It included resources for teachers, students and parents and continued work on lesson structure, planning, assessment, and integration of content.
- Our Scope, Sequence and Pacing activity, led by Heather Haines, addressed implementation, as well as navigated the transition resource map.
- The Math Practices group, headed by Tina Bloom, included key strategies (Concrete-Pictorial-Abstract), as well as problem-solving and questioning techniques.

Staff moved through each activity in two-grade level groups to encourage bridging and conversation. We wrapped up as a whole building at the end to re-cap and discuss lessons, homework, differentiation and technology.

Conant School: Submitted by Damian Sugrue

We focused on using the district writing rubrics to calibrate our scoring of narrative writing prompts. Teachers worked in grade level teams to score pieces and discuss scoring discrepancies to ensure they were all on the same page as to what their grade level expectations look like.

Douglas School: Submitted by Chris Whitbeck

The staff at Douglas School spent the day working together with Dan Wise, a visiting lecturer at Tufts and a former teacher at High Tech High. The goal of the day was to form a model for grade levels of pedagogy to meet our school vision and to "tune" each teacher's specific plans for instruction. Together we practiced Critique, a method of providing kind, specific, and helpful feedback. We critiqued and planned from models of instruction that Dan Wise brought, and we participated in tunings of instruction in grade five and grade one.

Gates School: Submitted by Lynne Newman

The Gates Staff used the Collaborative Problem Solving model to learn how to work with students with challenging behaviors. [Teaching Challenging Kids: The Collaboration Problem Solving Approach by J. Stuart Ablon, Ph.D. Director of Think:Kids from Mass General Hospital.]

The philosophy of Think:Kids is, "Kids do well if they can... if they can't, something is getting in the way. We need to figure out what so we can help."

In working with challenging behaviors we need to identify triggers/expectations, lagging skills, and challenging behaviors. Lagging thinking skills include:

- Language and Communication Skills
- Attention and Working Memory Skills
- Emotion and Self-Regulation Skills
- Cognitive Flexibility Skills
- Social Thinking Skills

Once a skill deficit is identified, the problem needs to be solved collaboratively. Traditional discipline doesn't work with our most challenging kids. Challenging kids lack skill, not will.

McCarthy-Towne School: Submitted by David Krane

The days when the entire faculty of a school can be together to work on instructional issues are incredibly valuable. This year was no different. Our day was divided into two parts, with the morning being devoted to literacy. We used Protocols to explore the work that has already started with the Primary Teams (K-2) and anticipating the work to be started with the Intermediate Teams (3-6) in January. We then came together as a school to discuss what emerged from each of the protocols, as well as some questions about assessment expectations.

The second part of the day was used to look at what many in our school have called portfolios. We used the time to look closely and critically, again using Protocols, at using authentic work as assessment, collection, and archive. Student work has always been used to illustrate progress and growth when conferring with parents, and so it is important for us to define how we use student work as a school in different contexts.

Merriam School: Submitted by Ed Kaufman

At Merriam School, Steven Levy (former Massachusetts Teacher of the Year, author of Starting from Scratch, and consultant for *Expeditionary Learning*) was our guest facilitator for the day. One of our goals this year is to reinvigorate and deepen the project-based work we do at our school, and Steven will be working with us six times this year to assist us in that process. He used videos, activities, student work samples and project description samples to stimulate discussion with our staff. The feedback from the evaluation forms was extremely positive, and we look forward to his next visit with us!

R.J. Grey Junior High: Submitted by Andrew Shen

For Professional Day, staff members at the Junior High met in their respective departments during the morning to continue work related to District Determined Measures and developing protocols for analyzing student results and identifying growth bands. A few departments also pursued work on shared curricular pursuits and adapting units to meet new goals. In the afternoon, most staff members met with their teams (i.e., 8 Green, 7 Gold) to develop team-based plans and activities for the year, along with discussing strategies and interventions for particular students who would benefit from additional support. Non-team staff met with colleagues from other schools, and our assistants met to discuss a book that they read as a group and how the ideas might apply to their work with students.

Acton-Boxborough Regional High School: Submitted by JoAnn Campbell

Departments at the high school balanced both school-wide and department-specific work during the November 5 Professional Day. School-wide topics included our academic integrity statement and examples to use within departments to educate students, discussions about homework and assessments, and mid-year exams.

Department-specific work focused on unit-based DDMs, grade level outcomes and frameworks within specific disciplines, and curriculum mapping.

Performing Arts 7-12: Submitted by Mark Hickey

The Performing Arts Department was assigned to do a few different things. Our elementary staff either took part in school-based professional learning in their own building or arranged a visit to another school to observe classes that held some significant learning for them. Kerrie Stewart is involved in a classroom music iPad project at Conant and visited another teacher using iPads in her class to see how they were being used there. Margaret Callaghan visited a school to observe lessons using recorders. She is including recorders in her curriculum to bring the Blanchard School in line with the department's curriculum.

The grade 7- 12 staff met as a group to continue its work on DDMs and to consider a new schedule of drama productions in order to resolve some scheduling concerns of the district.

Visual Arts K-12: Submitted by Diana Woodruff

The elementary Visual Arts teachers either took part in the school-based professional learning in their own building or collaborated on iPad applications for the art classroom and aligned art units to the National Visual Arts Standards.

The junior high Visual Arts teachers worked with other exploratory teachers and the technology specialist on PowerSchool grading/comment issues and also focused on Art I and Art 2 cohorts' DDM data.

The high school Visual Arts teachers continued to work on DDMs, compiling and recording data from initial implementation.

Physical Education and Health: Submitted by David James

Throughout the day, the k-12 health and physical education department worked on:

- Drafting a mission and vision statement for the future.
- Comparing curriculum to k-12 national outcomes.
- Learning the Fly Casting unit that is taught at the JH.
- Working on DDMs in grade-level department groups.

We concluded with building-based small group work. The elementary staff did belay escapes. The junior high and high school staff continued with DDM work.

Nursing: Submitted by Diane Spring

All members of the nursing department were fortunate to attend a daylong presentation specifically for school nurses, presented by the Massachusetts Department of Public Health (MDPH) in collaboration with the Northeastern University School Health Institute. We were among about 450 school nurses from our State.

We were enthralled by a dynamic speaker, Charlie Applestein, MSW, who spoke with us on "Working with Challenging Students, Creating a Strength Based Culture in your School Setting." We also received timely updates from the MDPH on Ebola and enterovirus D-68 surveillance, prevention of prescription and other drug abuse, and oral health initiatives.

The updates were relevant to our school nursing practice, and it was our group's consensus that Mr. Applestein would be a great candidate as a speaker for our entire educator population.

Educational Technology: Submitted by Amy Bisiewicz

The EDTech Operations team met to share knowledge about ABSchools admin tools and to test Google Classroom. The EDTech Academics team updated the edtech@ab website and began exploring digital citizenship curriculum.

Carol P. Huebner Early Childhood Program: Submitted by Joe Gibowicz

During the morning, the Early Childhood Program staff participated in a Professional Learning workshop led by Teachers21. Thirty five Early Childhood staff were in attendance; included were Special Education Preschool Teachers, Classroom Assistants, Speech Pathologists, a Physical Therapist, ABA Trainers, the Preschool's BCBA, and the Early Childhood Coordinator. The morning workshop, led by Abby Hanscom from Teachers21, focused on Resiliency and what it means for students and teachers. During this interactive workshop, Carol Dweck's work on Fixed Mind Set vs. Growth Mind Set was highlighted. One of the areas we focused on was how we deliver feedback to children (and each other). We talked about growing hope and the importance of using "growth mindset praise" (attributing success to hard work and perseverance rather than being smart or the best).

In the afternoon, the Special Education Preschool Teachers continued their ongoing work on aligning the Early Childhood Progress Report with the Common Core Standards and

Teaching Strategies Gold Assessment. The Speech Pathologists collaborated together on the following speech/language topics: fluency, assessing their current evaluation tools, reviewing multilingual evaluation and treatment and use of visual supports for play and Augmentative and Alternative Communication.

Secondary Special Education: Submitted by Mary Emmons

Secondary special educators focused on self-determination skill building for the purpose of transition to adulthood and post-secondary planning.

There was a slide presentation and group work related to self-determination and self-advocacy curriculum, as well as development of IEP goals related to these skills.

Secondary Counseling Department: Submitted by Todd Chико

The high school counselors met to discuss our DDMs, create the tool/spreadsheet to follow both DDMs, and discuss our timeline for doing them. We were also able to discuss our shared goal in the afternoon around our SST.

The junior high school counselors met to discuss their DDMs; then they met with their teams to discuss students, plan activities for the year, and discuss the Ambassador Program.

Speech and Language Pathologists: Submitted by Lannon Twomey

Most of the SLPs were involved in building-based programs. Two participated in webinars related to evaluating and working with ELLs, as well as learning instructional strategies and accommodations for students with word retrieval deficits.

Special Education Assistant Training: Submitted by Mary Emmons

One hundred five special education and speech/language assistants, K-12, attended this training.

Agenda

- I. Behavior Training Protocols: Behavior interventions and how to implement them across the grades

Presenter: Nicole Souci, BCBA

- II. Learning Disabilities Training

Presenters: Lynne Laramie, Coordinator of Special Education, K-6

Louise Provan, Acting Coordinator of Special Education, 7-12

Goal: Understanding characteristics of students with learning disabilities and implementing programming, strategies, and accommodations

Activities:

1. F.A.T. City: Video on Understanding Learning Disabilities
2. CASE studies on various disability types and implementing appropriate programming, strategies, and accommodations. Each group created a plan for the student profile they were given.

Community Education, Extended Day Staff: Submitted by Erin O'Brien Bettez

We started our day reviewing the powerful interactions we have with children and how our actions dramatically affect them. We learned to identify the signs of stress in children, as well as what triggers and signals we can look for, and discussed some methods of de-escalation. Our day included work as a full staff as well as in small groups discussing various scenarios and strategies.

ACTON-BOXBOROUGH REGIONAL SCHOOLS 2015-2016 KINDERGARTEN REGISTRATION SCHEDULE

The following are important dates for parents/guardians of children who will be entering Kindergarten in September, 2015 (**5 years old on or before September 1, 2015**). See also: <http://www.abschools.org/families/student-registration>

GENERAL MEETING*

Our Superintendent, Director of Curriculum and Assessment, Director of Personnel, Director of Pupil Services, Principals, Registrar, Kindergarten staff and School Nurse will be on hand to answer questions.

Tuesday, January 13, 2015 at 7:00 p.m., R.J. Grey Junior High Auditorium

SCHOOL TOURS

All schools will be open for tours on the following dates: January 23; January 27, February 2, February 11. Please call individual schools after January 5, 2015 to reserve tour times. You may reserve more than one tour per day. If school is canceled or delayed on a tour day, parents should call to reschedule.

Tour hours for Blanchard, Douglas, Gates: 8:45 – 10:00 a.m. and 12:30 – 2:00 p.m.

Tour hours for Conant, McCarthy-Towne & Merriam: 9:30-10:45 a.m. and 11:00 – 12:15 p.m.

Please do not bring young children with you on the tour.

EARLY REGISTRATION for SIBLINGS and WALKERS

Families who are eligible, or who believe they may be eligible for priority admission status (siblings of current students, walkers), are urged to register early. Both sessions will be at the Central Office located in the R.J. Grey Junior High School **You must bring a copy of your child's birth certificate/passport, most recent physical examination & immunization record.**

Tuesday, January 20: 9:00 a.m. - 12:00 noon and 7:00 - 9:00 p.m.

Wednesday, January 21: 9:00 a.m. - 12:00 noon

PARENT INFORMATION EVENING MEETINGS*

Tuesday, January 20, 7:00 p.m. @ McCarthy-Towne - Cafetorium

Tuesday, January 27, 7:00 p.m. @ Gates- Cafetorium

Tuesday, February 3, 7:00 p.m. @ Merriam - Cafetorium

Tuesday, February 10, 7:00 p.m. @ Blanchard - Cafetorium

Tuesday, February 24, 7:00 p.m. @ Conant – Cafetorium

Tuesday, March 3, 7:00 p.m. @Douglas - Cafetorium

** In case of snow, ANY postponed evening meeting will be held the next evening (Wednesday)*

KINDERGARTEN REGISTRATION

You must bring a copy of your child's birth certificate/passport, most recent physical examination & immunization record and Proof of Residency. Both sessions will be at the Central Office located in the R.J. Grey Junior High School.

Tuesday, March 10: 9:00 a.m. - 12:00 noon and 7:00 - 9:00 p.m.

Wednesday, March 11: 9:00 a.m. - 12:00 noon

REGISTRATION PROCESS for COMMUNITY ED EXTENDED DAY PROGRAM, K-6

Registration forms for new families will be accepted beginning March 10, 2015. Please note: Community Education offers an enriched program for the other half of the school day for children placed in half day Kindergarten. Tours are available anytime by appointment and Community Ed. will host a Kindergarten Open House on Monday April 6th, 2015 from 6:00-7:30 pm. Children are welcome! Contact Sally Cunningham for more information at [978-266-2525](tel:978-266-2525).

OTHER IMPORTANT DATES

Late April -School Placement & All-Day Kindergarten Lotteries held (as necessary). Notification letters sent out.

May 15 – All Day K non-refundable deposit due.

May 31 - Parent-released/teacher-completed Pre-K Assessment Form due at Registrar's Office, R.J. Grey Junior High

July 1 - (*Approx. date*) Schools assign students to either AM or PM sessions and notify Transportation Office.

July 31 - Children's medical forms (complete immunization history, physical exam completed after 1/1/15) due at school nurse's office.

August 1 - September tuition for children registered in All-Day K due at the Community Ed. Office.

11/6/14

Revised

Office of the Superintendent
Acton-Boxborough Regional Schools
16 Charter Road
Acton, MA 01720
978-264-4700 x 3206
www.abschools.org

TO: All Schools
FROM: Superintendent Glenn Brand
DATE: November 4, 2014
RE: **Dismissal Schedule for November 26, 2014**

On Wednesday, November 26, the day before Thanksgiving, dismissal times for the schools will be as follows:

Junior High:	11:06 a.m.
Senior High:	11:18 a.m.
Blanchard/Douglas/Gates	12:20 p.m.
Conant/McT/Merriam	1:00 p.m.

Please note: Elementary dismissal follows the usual Thursday schedule.



Acton-Boxborough Regional School District
Superintendent's Office
16 Charter Road
Acton, MA 01720
978-264-4700 www.abschools.org

Glenn A. Brand
Superintendent of Schools

To: Acton-Boxborough Regional School Committee Members
From: Glenn Brand
Date: 11/18/2014
Re: Community Preservation Committee Funding

In April of last year, the School Committee received information regarding natural outdoor play spaces for the Acton schools. Part of this effort included the identification of the desire to add natural play spaces outdoors for children to access. This effort culminated in a 2014 Community Preservation Association project grant in the amount of \$24,000 to support the design of play spaces at the five (5) elementary schools and the Administration Building for the Pre-School. The total for the design phase of this effort was \$34,625 with \$24,000 coming from the CPA grant and the remaining balance from the district.

With a completed design now in hand, the District is putting forth a project application (attached) to the CPC for a total of \$131,900 to support the construction of these play spaces. The district will be required to contribute up to \$33,700 for the balance of the project.

Funding for the construction of a similar space at the Blanchard Memorial School will be pursued through the Boxborough Community Preservation Association.

This is an exciting opportunity for the District and I will keep you apprised of the status of the grant and project development along the way if we are successful.



Acton-Boxborough Regional School District
Superintendent's Office
16 Charter Road
Acton, MA 01720
978-264-4700 x 3206 www.abschools.org

Glenn A. Brand
Superintendent of Schools

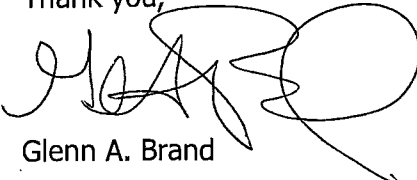
To: Town of Acton Community Preservation Committee
From: Glenn A. Brand, Superintendent of Schools
Date: 11/17/14
Re: Application for CPA funds for 2015

We are pleased to submit this application for funding through the CPA grant process for 2015. We are fortunate that Acton believes in green spaces for recreation, and believes in the value of play. We hope that our vision, described herein, of creating nature-based place spaces on elementary school sites, will be seen as providing a long-term benefit for the residents of Acton. The proximity of these playspaces to heavily-used recreational fields in town will make them a natural extension of play for families attending events at or next door to schools.

It is our plan to do a great deal of the site prep work with our existing facilities staff, using an outside contractor for specific tasks that are not within our capabilities, particularly as regards safety and handicapped accessibility.

Please feel free to contact Deborah Bookis or me if you need further information.

Thank you,



Glenn A. Brand

cc J.D. Head, ABRSD Director of Facilities
Deborah Bookis, ABRSD Director of Curriculum, Instruction and Assessment
Eileen Sullivan, APS Curriculum Specialist (retired), consultant
Holly Ben Joseph, Landscape Architect
Cathy Fochtman, Town of Acton Director of Recreation

Our Mission is to prepare all students to attain their full potential as life-long learners, critical thinkers, and productive citizens of our diverse community and global society.

CPA PROJECT APPLICATION FORM – 2015

Applicant: Acton-Boxborough Regional Schools **Submission Date:** November 17, 2014

Applicant's Address:

Purpose: (Please select all that apply)

16 Charter Road, Acton, MA

Phone Number: 978-264-4700

Contact: Glenn Brand gbrand@abschools.org
Deborah Bookis dbookis@abschools.org

- Open Space
- Community Housing
- Historic Preservation
- Recreation**

Town Committee (if appropriate) Recreation Commission

Project Name: AB Schools Nature Play Spaces

Project Location/Address: AB school sites (Conant, Douglas, Gates, Parker Damon Bldg)

Amount Requested: \$132,400 (see budget for cost breakdown)

Project Summary: In the space below, provide a brief summary of the project.

This project begins construction of the Nature Playspaces at the Acton-Boxborough elementary schools. CPA and district funds were used to enable the planning process in 2014. Plans will be ready for implementation by early 2015, construction beginning in summer, 2015.

Playspaces will include areas for sand, gravel and dirt play, climbing on natural materials such as trees and rocks, (with appropriate safety mulch surface) handicapped accessible trails and planting stations, areas of native grasses, willow tunnels, bridges and areas for building temporary structures of native materials. Spaces will also include gathering spaces allowing class use as well.

We are aware of the richness of Acton's Conservation lands for family outings and occasional school field trips. Expanding on that, we are anxious to create spaces on the school grounds that provide for *supervised but unstructured* play with natural elements.

The Acton Boxborough Schools' outdoor play areas will be a rich resource for students during school hours and for community members seven days a week. Current play areas and structures, while situated in the outdoors, do not invite children to interact with nature in *independent* ways.

Planning funds from the CPA have enabled us to develop plans for schoolyard nature playspaces that will be handicapped accessible, simply constructed, and easily supervised by recess monitors. These play spaces will provide children chances to dig in the dirt for worms, build with natural materials, gather for a story with a seat on a log, and have the chance to draw, paint, read or explore in a natural setting. It is our hope that giving children more play options at recess time will provide for a healthier and more collaborative experience at recess, particular for our non sports-oriented students.

The design of each space reflects the unique landscape of the school site, as well as each school community's desire for use of the space. Information was gathered from several group meetings and outreach at each school. Since the budget for the natural play spaces is limited, the design schemes do not rely on expensive elements but rather elements that volunteers can install or donate to the school. Professional contractors will be engaged for areas/elements that are more complex or represent a safety or liability concern or handicapped accessibility.

*Children are smarter, more cooperative, happier and healthier when they have frequent and varied opportunities for **free and unstructured play** in the outdoors."*

– Cheryl Charles, *Children and Nature Network*

Estimated Date for Commencement of Project: April, 2015

Estimated Date for Completion of Project: November, 2017

Project Narrative:

Rationale/Background Information

Along with the work of the individual school's playground committees, the elementary teachers have noticed over the past decade or so, that very few students have opportunities for unstructured play-time in natural environments. In 2007, a group of teachers, along with the Elementary Curriculum Specialist for Science, became familiar with the "No Child Left Inside" movement while attending a conference at Wheelock titled *Connecting Children and Nature*. The Keynote speaker was Richard Louv, author of *Last Child in the Woods; Saving Our Children from Nature Deficit Disorder*. His groundbreaking book has provided quite an inspiration for a national network of researchers, educators, and families, all of whom share the goal of making sure that children have the right to the time and space needed for unstructured, natural play.

Scope of Work Completed Under Last Year's Grant: Concept Development, Preliminary Design & Final Schematic Plan:

In our goal to create spaces for all pre-K 6 students, we have developed specific design plans for each of the elementary schools, including Blanchard, for which funds are not being sought from the Town of Acton CPC. During the period of the planning grant, the funds provided for the Landscape Architect, in collaboration with school and town staff, community partners and parents have accomplished the following:

Task One- Completed- Surveys and input:

- Walked each school site with stakeholders (school staff and playground committees, etc) to locate potential areas for a natural play space.
- Developed base plans for each site.
- Held kick-offs meeting with the play-space committees from each school to brainstorm ideas and review individual desires for each school. At this meeting a power point presentation of other examples of natural yards, and possible elements was shown, followed by an interactive development of ideas and goal formation for each site.
- Developed a schematic design sketch for a natural play space for each site and proposed an accessibility route to the yard.

Task Two – Completed- Presentation of designs/review/revision

- Second Meeting: Presented the design sketches to the play-space committees of each school and elicit feedback to guide revisions for the final master plan.
- Adjusted plans according to feedback from school play-space committees, school maintenance staff and principals.

Task Three – Partly finished- Development/presentation of schematic design

- Draw final master plan in electronic CAD for each school based on comments and feedback at the meetings. These plans will have sufficient information from which to construct the yards for school staff and volunteers.
- Third Meeting: Cost estimates, phasing suggestions and lists of tasks for volunteers and contractors have been developed. One additional meeting at each site is planned for the winter months to review the final master plans.



Proposed Scope of Work to be Completed – Design and Construction

This grant will fund the completion of design work and construction of the nature play yards at the four school sites in Acton. The planning also includes the integration of construction by a landscape contractor, AB Facilities staff, Department of Public Works staff and volunteers. The following describes this in more detail

Task One – Design and Construction:

- A construction booklet will be developed of details and specifications that can be used for all of the schools.
- Assist Acton-Boxborough Schools develop a bid package for contractors and provide guidance in selecting contractors with nature play yard experience.
- During construction, run once weekly construction meetings to follow construction progress, answer questions and make design adjustments as necessary. A representative from AB schools and ideally each schools' staff will attend each meeting.

Task Two – Volunteer Coordination & Grant Writing:

- Work on researching and writing grants for funding of specific elements such as musical instruments, sheds, and art elements.
- Select a nature-yard volunteer team or head, (for each school) and act as liaison between the Designer, AB Facilities and the school volunteer to coordinate what work will be needed to be completed by volunteers at each school.

Budget Summary

For Budget Details/Cost Breakdowns for all schools- See Appendix A

Acton-Boxborough Schools Nature Play Spaces - Funding Requested & In-House (in kind) Work

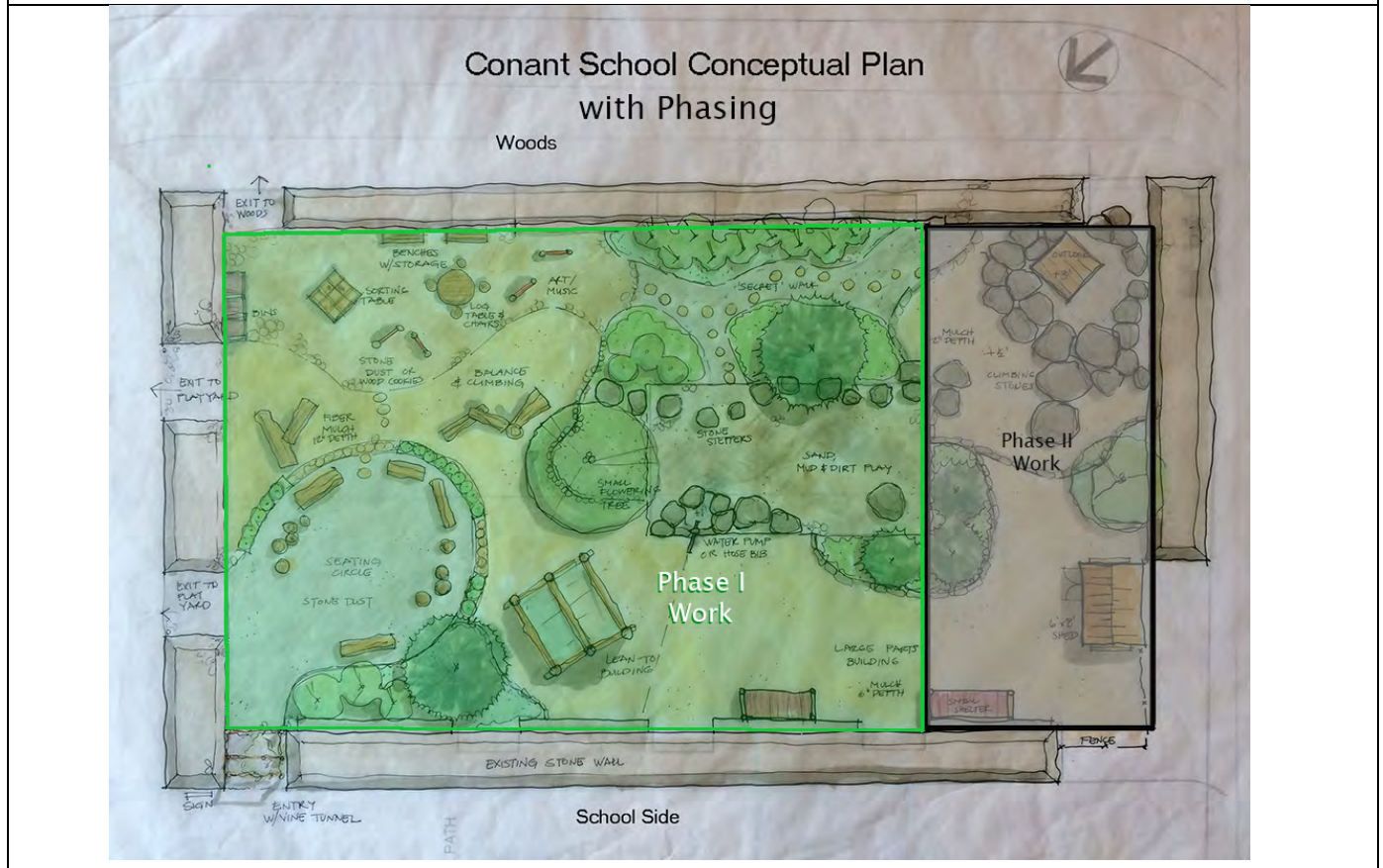
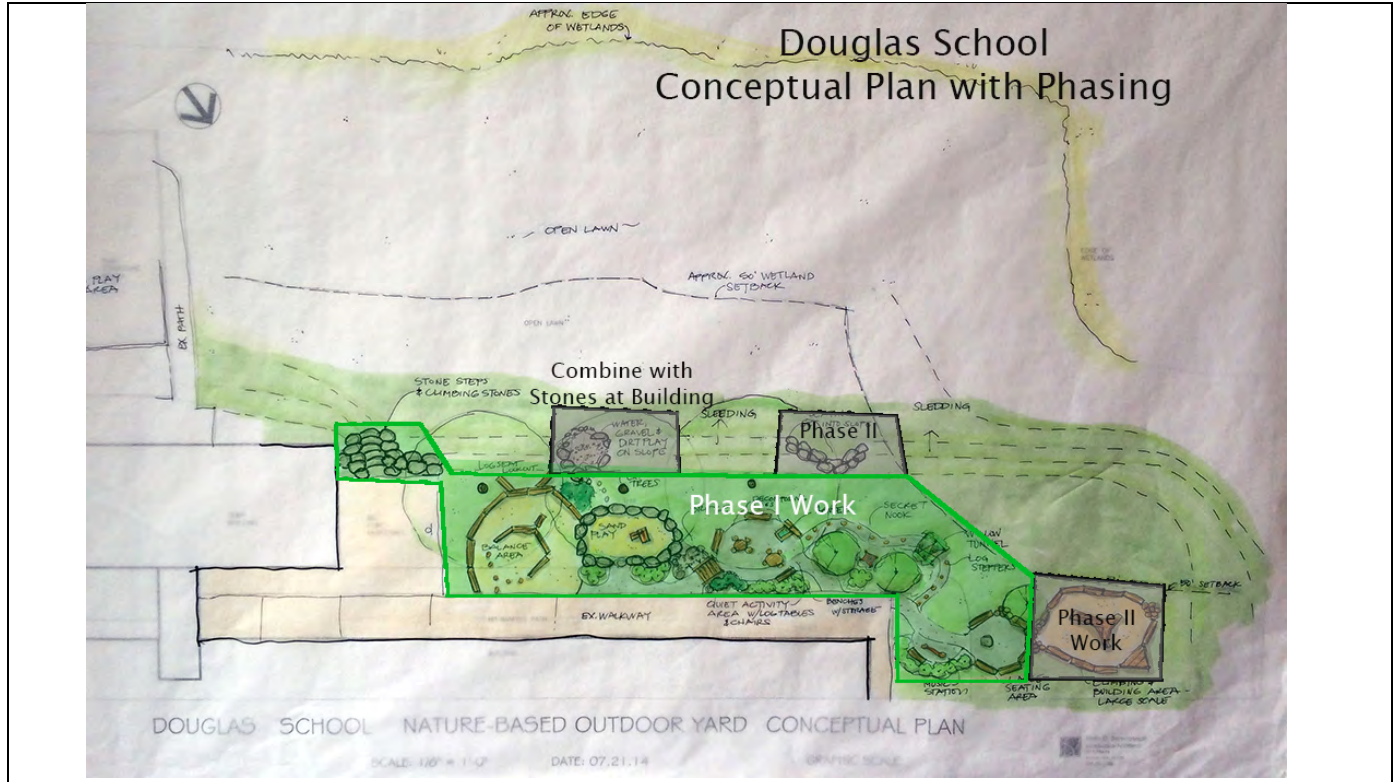
Based on Conceptual Schemes- see budget for specific details

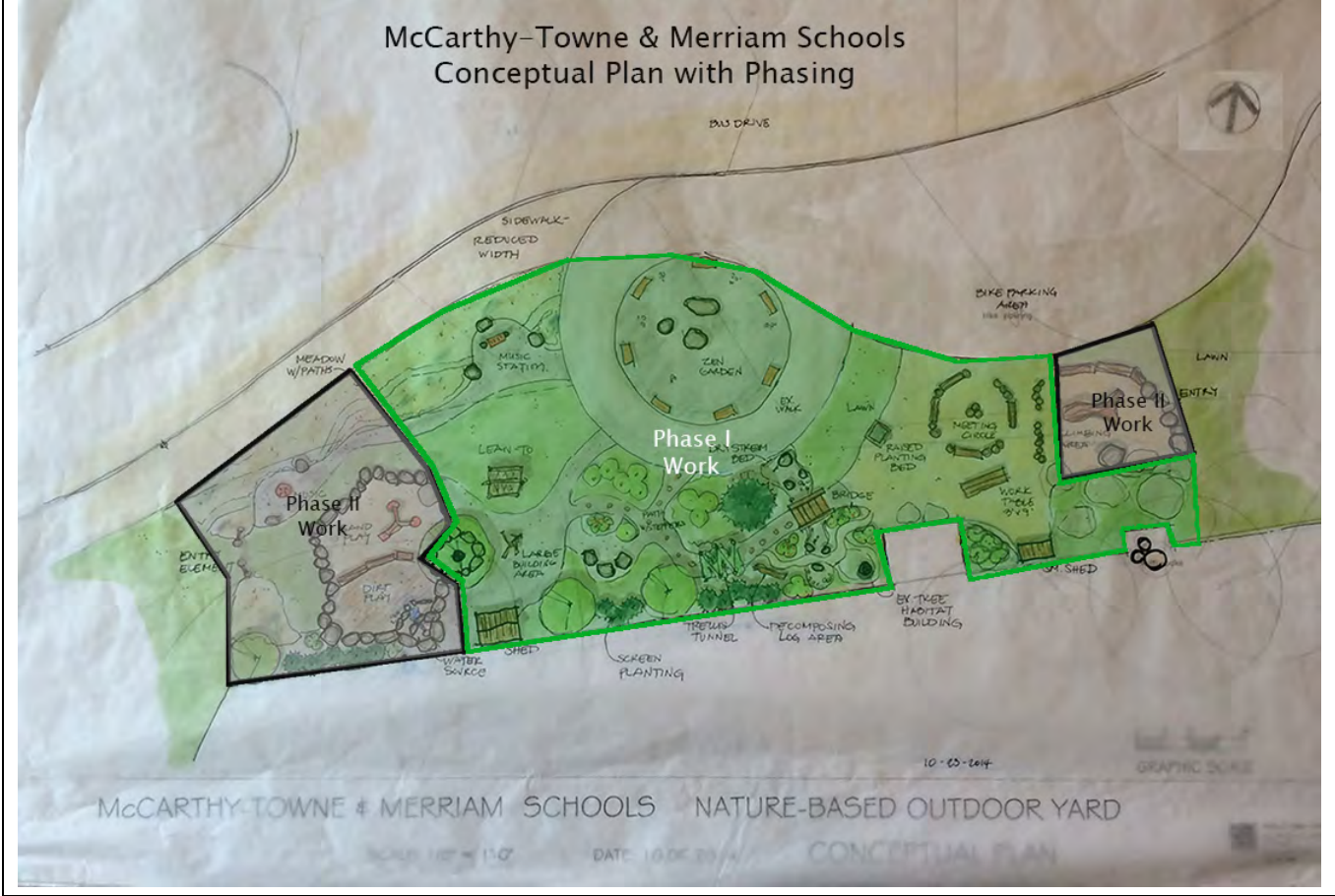
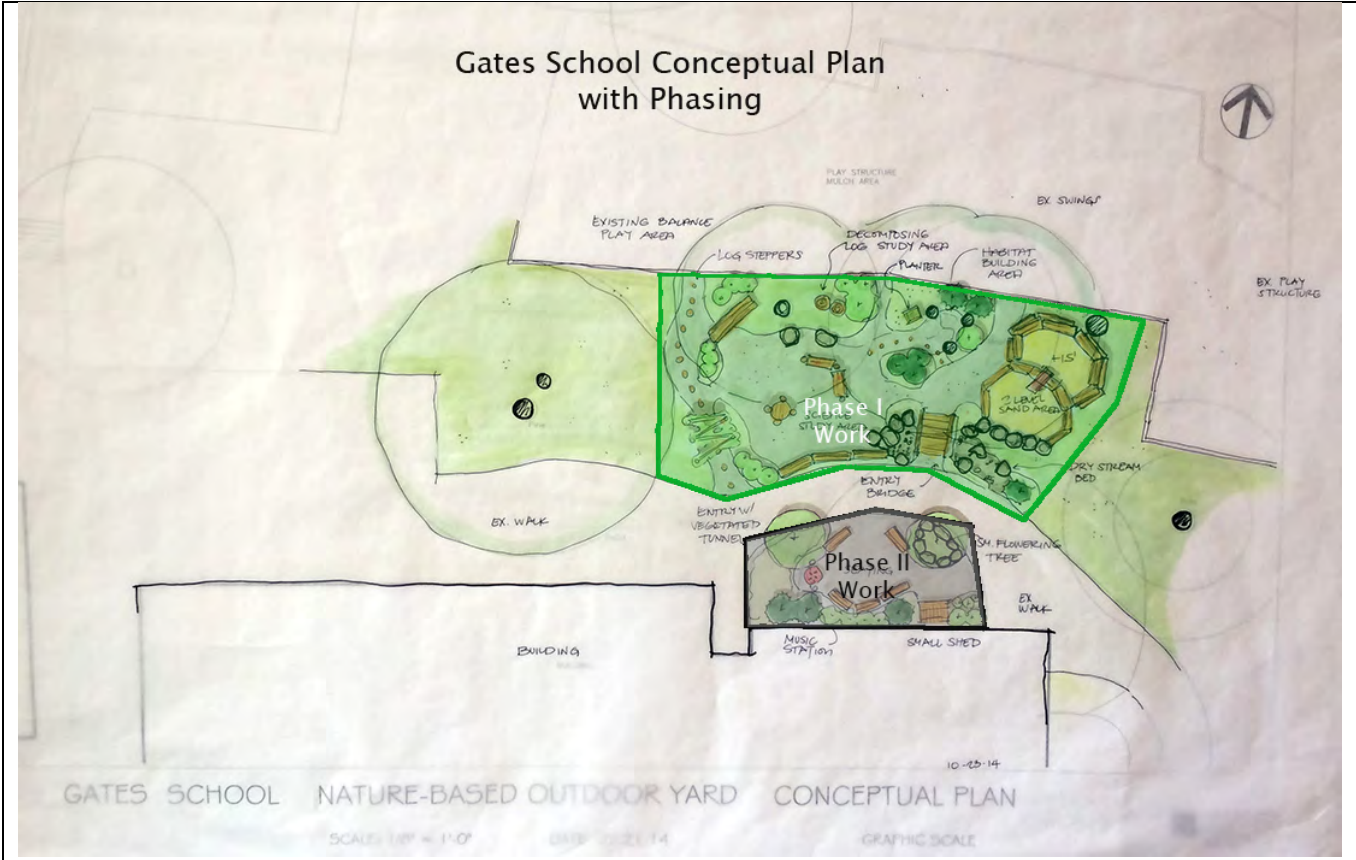
Prepared by: Holly Ben-Joseph, Landscape Architect

Date: 11-10-2014

School	Funds Requested	AB Facilities/ In-house Work
1. Conant		
a Construction	\$24,800	\$8,400
b Design - Details, Specifications & On-site administration & observation during construction	\$6,000	
2. Douglas School		
a Construction	\$23,300	\$8,800
b Design - Details, Specifications & On-site administration & observation during construction	\$6,000	
3. Gates		
a Construction	\$24,800	\$6,900
b Design - Details, Specifications & On-site administration & observation during construction	\$6,000	
4. McCarthy-Towne & Merriam		
a Construction	\$35,500	\$9,600
b Design - Details, Specifications & On-site administration & observation during construction	\$6,000	
Total of funds requested and total value of in-house work	\$132,400	\$33,700

Schematic plans for proposed sites.



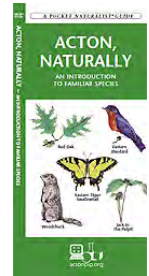


Appendix B

Community Partners:

Acton-Boxborough Regional Schools will continue to collaborate with a number of community groups throughout the planning process, and will invite collaboration from additional groups. Current connections include:

AB PIP STEM- ([Acton-Boxborough Parent Involvement Project](#) supporting Science, Technology, Engineering and Mathematics.) This vibrant organization has been supportive of our efforts to reconnect children and nature for several years, offering book study on *Last Child in the Woods*, by Louv, and *Keeping a Nature Journal*, by Clair Walker Leslie, local artist/naturalist. AB PIP was a financial backer for the production of the Acton Naturally guide- co-designed by the Acton Public Schools and Tom Tidman. (on sale at EMS or through PIP). PIP also has connections with hundreds of high school volunteers who help at Science and math events. This volunteer base could/ would be tapped to help with small parts of the construction phase, once the planning work is completed.



Elementary School PTOs and Playground Committees- We have had discussions with Elementary principals as to the need for their support in the planning process and recruited a number of parents, including a civil engineer, who are involved in the planning process.

Town of Acton- Conservation Department- The schools have a long-standing working relation with Tom Tidman. Cathy Fochtman and Dean Charter, who will be invaluable as this process moves forward. will continue to consult with us, and advise regarding any additional permitting that will be necessary.



Local vendors and contractors, Eagle Scouts and the Acton Water District – In our previous experience in developing the Outdoor Classroom, we found the generosity of parents who had contracting skills and equipment, local Eagle scouts with great organizational abilities and means to fund-raise, all to be critical to making things happen. In previous projects we have had bridges built, trees donated and planted, soil donated (Acton Water District). Eagle Scout projects have included benches, seating areas, gazebos, trails, plantings, and much more.

The Discovery Museums have partnered with us for many years, and, as they move forward with the development of their new outdoor spaces, Neil Gordon has offered to share any knowledge they gain along the way, particularly as it regards usage of new outdoor elements, which ones are working well, etc.

AB Facilities Department – JD Head, Director of the Facilities Department, has offered to make available any heavy equipment that he has at his disposal, and also to assist in portions of construction during the summer, in order to lessen the costs for construction of the play yards and creating accessible pathways. Specific details are included in the budget.

Acton Community Housing Corporation

Nancy Tavernier, Chairman

TOWN OF ACTON

Acton Town Hall

472 Main Street

Acton, Massachusetts, 01720

Telephone (978) 263-9611

achc@acton-ma.gov

Help Envision Future Housing for Acton

Acton – Do you live in **Acton**? Are you interested in helping to shape a vision for housing in your community? The Town of Acton is preparing a Housing Production Plan which will identify housing needs and demand, and establish goals for future affordable housing development. The plan will ultimately be approved by the Board of Selectmen and the Planning Board. The Acton Community Housing Corporation, the Town's affordable housing committee, will be facilitating the Plan.

Join the Town of Acton and the Metropolitan Area Planning Council (MAPC) for a public forum on **Thursday, December 11, at 7:00 p.m. at the Town Hall, room 204**, located at 472 Main Street.

The meeting will give the public the opportunity to share thoughts and concerns about Acton's housing market and to shape housing development goals. This is the first of two public meetings that will inform Acton's Housing Production Plan, which aims to help maintain and increase affordable housing opportunities in the town.

MAPC has worked to identify current housing needs, demand, and development constraints. The Town now seeks the public's input on these issues and assistance in identifying sites for new housing development. This meeting will help establish future housing goals and strategies for implementation.

The event will include a presentation on the purpose of a Housing Production Plan, regional demographic trends, and current housing needs in Acton, followed by discussion aimed at identifying housing challenges, assets, and opportunities.

To RSVP, visit <http://tinyurl.com/pedrsye>. To share your thoughts on current and future housing opportunities in Acton, please complete a brief survey before November 28, found here: <http://tinyurl.com/ok2b4m7>. Survey results will help shape discussion at the public forum.

For more information about the Acton Housing Production Plan, contact Karina Milchman at 617-933-0738 or kmilchman@mapc.com.



Acton-Boxborough Regional School District
Personnel Office
16 Charter Road Acton, MA 01720
978-264-4700 x 3209 fax: 978-264-3340
www.abschools.org

14.7

Marie Altieri

Director of Personnel and Administrative Services

To: Acton-Boxborough Regional School Committee
Date: November 20, 2014
Re: Educator Evaluation Ratings Report

Each school district in Massachusetts is required to report evaluation ratings of all educators as part of the summer EPIMS (Educator Personnel Information Management System) report that we submit. This past summer was the first time that ABRSD and Acton Public Schools reported ratings. As a Race to the Top district, Boxborough Public School District (BPS) was required to report ratings a year ago. The ratings of individual educators are not public, but the aggregate data (embargoed until last Thursday), was posted by the DESE publicly on Thursday, November 13, 2014.

BPS evaluated all educators in the 2013-2014 school-year. APS and AB evaluated 50% of our educators in 2013-2014. Please be aware that the aggregate ratings reflect 50% of the educators at AB and APS, and that it was the first year of calibrating ratings across the districts. Next year you will see the aggregate data of all teachers and administrators at AB, so the percentages will be somewhat more meaningful next year, and then again the year after when we have more experience calibrating ratings.

It is worth noting that our administrative team did not want to report ratings to the state. We believe that performance ratings are between the supervisor and the teacher or administrator. We believe that confidentiality allows for a more honest rating and process for improvement. We also believe that statewide comparisons are not valid, as each district determines how their Exemplary

Our Mission is to prepare all students to attain their full potential as life-long learners, critical thinkers, and productive citizens of our diverse community and global society.

differs from Proficient, and how Proficient differs from Needs Improvement, etc. If you look at the attached chart, you can see that ratings clearly differ across school districts.

We had hoped to not report the ratings, but we were unable to submit the EPIMS report without them. As such, we went ahead and reported them. We would like to write a letter to the commissioner objecting to the state reporting of ratings and would welcome the opportunity to partner with the School Committee and the ABEA on such a letter if it is agreeable. . For now, please take a look at the attached ratings, and let us know if you have any questions.

Massachusetts School and District Profiles
2013-14 Educator Evaluation Performance (DISTRICT)

All Educators

During the 2013-2014 school year, Race to the Top (RTTT) districts were required to implement educator evaluation systems aligned to the new
 for Evaluation framework with all educators district-wide. Non-RTTT districts were required to implement with at least 50 percent of their educators. Please note that some district and school data is not
 antially reasons. In instances where a cell is blank, ESE has suppressed data due to one of the following reasons: (1) the number of staff evaluated was fewer than 6, (2) all staff evaluated in the group
 all educators were evaluated and a single educator had a rating different from all other educators in the group.

More information about the data

Report Type: **District** Year: **2013-14** Group Type: **All Educators**

Org Name	Org Code	# of Educators to be Evaluated	# Evaluated	% Evaluated	% Exemplary	% Proficient	% Needs Improvement	% Unsatisfactory
Abbv Kelley Foster Charter Public (District)	04450000	138	135	97.8	9.6	85.2	5.2	0.0
Abington	00010000	159	153	96.2	12.4	81.7	4.6	1.3
Academy Of the Pacific Rim Charter Public (District)	04120000	56	56	100.0	16.1	73.2	5.4	5.4
Acton	00020000	185	96	51.9	5.2	93.8	1.0	0.0
Acton-Boxborough	06000000	241	131	54.4	10.7	87.8	1.5	0.0
Acushnet	00030000	85	82	96.5	2.4	86.6	9.8	1.2
Adams-Cheshire	06030000	123	120	97.6	0.0	99.2	0.8	0.0
Advanced Math and Science Academy Charter (District)	04300000	Non-RTTT Commonwealth Charter School – Not required to report						
Agawam	00050000	374	364	97.3	5.2	93.7	1.1	0.0
Alma del Mar Charter School (District)	04090000	Non-RTTT Commonwealth Charter School – Not required to report						
Amesbury	00070000	197	188	95.4	4.3	94.1	1.6	0.0
Amesbury Academy Charter Public (District)	04150000	12	6	50.0	0.0	66.7	33.3	0.0
Amherst	00080000	158	156	98.7	14.1	84.6	1.3	0.0
Amherst-Pelham	06050000	185	183	98.9	8.2	90.7	1.1	0.0
Andover	00090000	569	351	61.7	8.0	90.6	1.4	0.0
Arlington	00100000	457	369	80.7	0.0	97.3	2.2	0.5
Ashburnham-Westminster	06100000	185	166	89.7	6.6	91.6	1.2	0.6
Ashland	00140000	223	211	94.6	16.1	82.5	1.4	0.0
Assabet Valley Regional Vocational Technical	08010000	123	119	96.7	5.0	92.4	1.7	0.8
Athol-Royalston	06150000	118	111	94.1	0.9	91.0	8.1	0.0
Atlantis Charter (District)	04910000	68	68	100.0	64.7	33.8	1.5	0.0
Attleboro	00160000	458	456	99.6	7.7	90.6	1.5	0.2
Auburn	00170000	207	207	100.0	3.4	94.2	1.4	1.0
Avon	00180000	76	73	96.1	1.4	90.4	6.8	1.4
Ayer Shirley School District	06160000	163	127	77.9	2.4	89.0	8.7	0.0
Bay State	00200000	470	452	96.2	8.4	89.8	1.8	0.0
Bay State Community Horace Mann Charter Public (District)	04270000	28	3	10.7	-	-	-	-
Baystate Academy Charter Public School (District)	35020000	Non-RTTT Commonwealth Charter School – Not required to report						
Bedford	00230000	265	265	100.0	0.0	97.7	1.9	0.4
Belchertown	00240000	216	215	99.5	2.3	96.7	0.5	0.5
Bellingham	00250000	207	173	83.6	6.4	90.8	2.3	0.6
Belmont	00260000	319	317	99.4	6.0	89.3	3.5	1.3
Benjamin Banneker Charter Public (District)	04200000	32	32	100.0	-	-	-	-
Benjamin Franklin Classical Charter Public (District)	04470000	Non-RTTT Commonwealth Charter School – Not required to report						
Berkley	00270000	74	73	98.6	4.1	94.5	1.4	0.0
Berkshire Arts and Technology Charter Public (District)	04140000	45	45	100.0	13.3	73.3	13.3	0.0
Berkshire Hills	06180000	146	128	87.7	10.9	87.5	1.6	0.0
Berlin	00280000	28	22	78.6	0.0	95.5	0.0	4.5
Berlin-Boviston	06200000	55	20	36.4	-	-	-	-
Beverly	00300000	371	361	97.3	12.5	84.2	1.9	1.4
Org Name	Org Code	# of Educators to be Evaluated	# Evaluated	% Evaluated	% Exemplary	% Proficient	% Needs Improvement	% Unsatisfactory
Billerica	00310000	473	404	85.4	5.9	85.1	8.4	0.5
Blackstone Valley Regional Vocational Technical	08050000	116	95	81.9	11.6	70.5	13.7	4.2
Blackstone-Millville	06220000	168	167	99.4	6.0	93.4	0.6	0.0
Blue Hills Regional Vocational Technical	08060000	90	53	58.9	18.9	79.2	1.9	0.0
Boston	00350000	5,143	4,063	79.0	17.6	77.1	4.7	0.6
Boston Collegiate Charter (District)	04490000	79	79	100.0	17.7	77.2	5.1	0.0
Boston Day and Evening Academy Charter (District)	04240000	37	37	100.0	43.2	56.8	0.0	0.0
Boston Green Academy Horace Mann Charter School (District)	04110000	46	46	100.0	17.4	82.6	0.0	0.0
Boston Preparatory Charter Public (District)	04160000	51	51	100.0	33.3	47.1	19.6	0.0
Boston Renaissance Charter Public (District)	04810000	93	89	95.7	27.0	55.1	18.0	0.0
Bourne	00360000	196	94	48.0	9.6	85.1	4.3	1.1
Boxborough	00370000	45	44	97.8	0.0	95.5	4.5	0.0
Boxford	00380000	85	49	57.6	0.0	98.0	2.0	0.0
Boxton	00390000	30	21	70.0	-	-	-	-
Brewster	00400000	492	492	100.0	8.7	88.6	1.8	0.8
Brewster	00410000	60	60	100.0	28.3	70.0	1.7	0.0
Bridge Boston Charter School (District)	04170000	Non-RTTT Commonwealth Charter School – Not required to report						
Bridgewater-Raynham	06250000	392	356	90.8	1.7	98.0	0.3	0.0
Brimfield	00430000	39	37	94.9	10.8	86.5	2.7	0.0
Bristol County Agricultural	09100000	44	20	45.5	-	-	-	-
Bristol-Plymouth Regional Vocational Technical	08100000	117	117	100.0	-	-	-	-
Brockton	00440000	1,393	1,344	96.5	1.5	97.2	1.3	0.1

Org Name	Org Code	# of Educators to be Evaluated	# Evaluated	% Evaluated	% Exemplary	% Proficient	% Needs Improvement	% Unsatisfactory
Brooke Charter School East Boston (District)	04570000	Non-RTTT Commonwealth Charter School – Not required to report						
Brooke Charter School Mattapan (District)	04430000	Non-RTTT Commonwealth Charter School – Not required to report						
Brooke Charter School Roslindale (District)	04280000	49	39	79.6	0.0	30.8	59.0	10.3
Brookfield	00450000	33	33	100.0	-	-	-	-
Brookline	00460000	747	343	45.9	0.0	97.4	2.0	0.6
Burlington	00480000	381	286	75.1	1.4	93.7	4.2	0.7
Cambridge	00490000	803	735	91.5	24.1	68.8	6.4	0.7
Canton	00500000	293	150	51.2	1.3	89.3	9.3	0.0
Cape Cod Lighthouse Charter (District)	04320000	Non-RTTT Commonwealth Charter School – Not required to report						
Cape Cod Regional Vocational Technical	08150000	87	82	94.3	17.1	61.0	19.5	2.4
Org Name	Org Code	# of Educators to be Evaluated	# Evaluated	% Evaluated	% Exemplary	% Proficient	% Needs Improvement	% Unsatisfactory
Carlisle	00510000	70	68	97.1	-	-	-	-
Carver	00520000	157	134	85.4	2.2	93.3	3.7	0.7
Central Berkshire	06350000	180	179	99.4	0.0	95.0	5.0	0.0
Cheimsford	00560000	429	408	95.1	6.9	91.4	0.5	1.2
Chelsea	00570000	513	500	97.5	1.4	81.8	15.6	1.2
Chesterfield-Goshen	06320000	27	14	51.9	-	-	-	-
Chicopee	00610000	777	639	82.2	9.9	87.9	1.7	0.5
Christa McAuliffe Regional Charter Public (District)	04180000	44	35	79.5	5.7	51.4	42.9	0.0
City On A Hill Charter Public (District)	04370000	39	39	100.0	15.4	74.4	10.3	0.0
City on a Hill Charter Public School II (District)	35040000	18	18	100.0	16.7	72.2	11.1	0.0
Clarksburg	00630000	23	15	65.2	-	-	-	-
Clinton	00640000	159	159	100.0	6.9	93.1	0.0	0.0
Codman Academy Charter Public (District)	04380000	27	15	55.6	13.3	66.7	20.0	0.0
Cohasset	00650000	133	18	13.5	5.6	77.8	16.7	0.0
Community Charter School of Cambridge (District)	04360000	56	54	96.4	7.4	85.2	7.4	0.0
Community Day Charter Public School - Gateway (District)	04260000	27	22	81.5	27.3	63.6	9.1	0.0
Community Day Charter Public School - Prospect (District)	04400000	46	42	91.3	35.7	61.9	2.4	0.0
Community Day Charter Public School - R. Kingman Webster (District)	04310000	24	24	100.0	41.7	58.3	0.0	0.0
Concord	00670000	205	203	99.0	3.4	96.1	0.5	0.0
Concord-Carlisle	06400000	133	133	100.0	5.3	93.2	1.5	0.0
Conservatory Lab Charter (District)	04390000	23	23	100.0	17.4	73.9	8.7	0.0
Conway	00680000	27	27	100.0	11.1	77.8	7.4	3.7
Danvers	00710000	325	291	89.5	0.3	98.6	1.0	0.0
Dartmouth	00720000	Did not implement						
Deerham	00730000	Did not implement						
Deerfield	00740000	56	53	94.6	3.8	92.5	3.8	0.0
Dennis-Yarmouth	06450000	369	366	99.2	24.6	72.1	3.3	0.0
Dighton-Rehoboth	06500000	252	246	97.6	4.9	94.7	0.4	0.0
Dorchester Collegiate Academy Charter (District)	04750000	26	23	88.5	8.7	78.3	8.7	4.3
Douglas	00770000	118	118	100.0	14.4	83.9	1.7	0.0
Dover	00780000	54	29	53.7	0.0	93.1	6.9	0.0
Dover-Sherborn	06550000	132	75	56.8	4.0	92.0	4.0	0.0
Dracut	00790000	251	230	91.6	5.7	88.3	6.1	0.0
Dudley Street Neighborhood Charter School (District)	04070000	13	10	76.9	20.0	80.0	0.0	0.0
Dudley-Charlton Reg	06580000	321	321	100.0	9.0	87.5	2.8	0.6
Duxbury	00820000	288	155	53.8	3.2	86.5	9.7	0.6
East Bridgewater	00830000	162	156	96.3	3.2	96.2	0.6	0.0
East Longmeadow	00870000	245	243	99.2	11.5	87.7	0.8	0.0
Eastham	00850000	33	33	100.0	36.4	60.6	3.0	0.0
Easthampton	00860000	140	134	95.7	3.7	93.3	3.0	0.0
Org Name	Org Code	# of Educators to be Evaluated	# Evaluated	% Evaluated	% Exemplary	% Proficient	% Needs Improvement	% Unsatisfactory
Easton	00880000	328	194	59.1	4.6	92.8	2.6	0.0
Edgartown	00890000	65	60	92.3	15.0	83.3	1.7	0.0
Edward M. Kennedy Academy for Health Careers (Horace Mann Charter School)	04520000	33	32	97.0	28.1	71.9	0.0	0.0
Erving	00910000	27	19	70.4	0.0	89.5	10.5	0.0
Essex Agricultural Technical	09130000	56	42	75.0	-	-	-	-
Everett	00930000	582	560	96.2	2.5	89.3	8.2	0.0
Excel Academy Charter (District)	04100000	44	39	88.6	15.4	79.5	5.1	0.0
Excel Academy Charter School - Boston II (District)	04590000	19	19	100.0	5.3	89.5	5.3	0.0
Excel Academy Charter School - Chelsea (District)	04610000	23	23	100.0	0.0	91.3	8.7	0.0
Fairhaven	00940000	165	154	93.3	3.2	90.3	5.8	0.6
Fall River	00950000	840	706	84.0	2.8	74.5	22.0	0.7
Falmouth	00960000	350	350	100.0	7.1	91.4	1.1	0.3
Farmington River Reg	06620000	23	10	43.5	-	-	-	-
Fitchburg	00970000	461	452	98.0	11.7	80.1	8.2	0.0
Florida	00980000	19	15	78.9	-	-	-	-
Four Rivers Charter Public (District)	04130000	Non-RTTT Commonwealth Charter School – Not required to report						
Foxborough	00990000	258	258	100.0	3.5	93.4	3.1	0.0
Foxborough Regional Charter (District)	04460000	106	101	95.3	58.4	28.7	10.9	2.0
Framingham	01000000	823	281	34.1	5.0	82.2	12.8	0.0
Francis W. Parker Charter Essential (District)	04780000	Non-RTTT Commonwealth Charter School – Not required to report						
Franklin	01010000	482	437	90.7	7.1	89.7	2.5	0.7
Franklin County Regional Vocational Technical	08180000	70	68	97.1	4.4	89.7	5.9	0.0
Freetown-Lakeville	06650000	230	219	95.2	7.3	86.8	5.9	0.0
Frontier	06700000	67	67	100.0	4.5	95.5	0.0	0.0

Org Name	Org Code	# of Educators to be Evaluated	# Evaluated	% Evaluated	% Exemplary	% Proficient	% Needs Improvement	% Unsatisfactory
Gardner	01030000	227	216	95.2	6.0	86.6	5.6	1.9
Gateway	06720000	107	102	95.3	0.0	98.0	2.0	0.0
Georgetown	01050000	136	3	2.2	-	-	-	-
Gill-Montague	06740000	127	112	88.2	8.9	82.1	8.0	0.9
Global Learning Charter Public (District)	04960000	59	59	100.0	18.6	66.1	10.2	5.1
Gloucester	01070000	318	318	100.0	9.1	88.7	2.2	0.0
Gosnold	01090000	Did not implement						
Grafton	01100000	261	261	100.0	6.1	91.2	2.3	0.4
Granby	01110000	89	88	98.9	11.4	81.8	6.8	0.0
Greater Fall River Regional Vocational Technical	08210000	152	141	92.8	0.0	95.7	4.3	0.0
Greater Lawrence Regional Vocational Technical	08230000	170	159	93.5	4.4	84.3	8.8	2.5
Greater Lowell Regional Vocational Technical	08280000	199	172	86.4	1.7	95.9	2.3	0.0
Greater New Bedford Regional Vocational Technical	08250000	219	219	100.0	0.9	97.3	1.8	0.0
Greenfield	01140000	Did not implement						
Groton-Dunstable	06730000	223	207	92.8	1.4	96.1	2.4	0.0
Hadley	01170000	63	62	98.4	29.0	69.4	1.6	0.0
Org Name	Org Code	# of Educators to be Evaluated	# Evaluated	% Evaluated	% Exemplary	% Proficient	% Needs Improvement	% Unsatisfactory
Halifax	01180000	49	27	55.1	7.4	92.6	0.0	0.0
Hamilton-Wenham	06750000	194	188	96.9	1.1	92.0	6.4	0.5
Hampden Charter School of Science (District)	04990000	47	44	93.6	6.8	54.5	31.8	6.8
Hampden-Wilbraham	06800000	277	136	49.1	0.0	99.3	0.7	0.0
Hampshire	06830000	84	48	57.1	2.1	95.8	2.1	0.0
Hancock	01210000	13	12	92.3	-	-	-	-
Hanover	01220000	215	95	44.2	5.3	94.7	0.0	0.0
Harvard	01250000	110	52	47.3	-	-	-	-
Hatfield	01270000	54	45	83.3	22.2	77.8	0.0	0.0
Haverhill	01280000	593	386	65.1	2.6	83.2	14.2	0.0
Hawlemont	06850000	21	11	52.4	0.0	90.9	9.1	0.0
Hill View Montessori Charter Public (District)	04550000	32	29	90.6	0.0	89.7	10.3	0.0
Hilltown Cooperative Charter Public (District)	04500000	Non-RTTT Commonwealth Charter School – Not required to report						
Hingham	01310000	339	333	98.2	13.2	84.7	2.1	0.0
Holbrook	01330000	116	113	97.4	3.5	92.0	4.4	0.0
Holland	01350000	28	27	96.4	14.8	77.8	7.4	0.0
Holliston	01360000	265	157	59.2	1.3	95.5	2.5	0.6
Holyoke	01370000	622	507	81.5	5.3	76.5	16.6	1.6
Holyoke Community Charter (District)	04530000	62	59	95.2	0.0	71.2	25.4	3.4
Hopedale	01380000	103	62	60.2	4.8	91.9	3.2	0.0
Hopkinton	01390000	306	163	53.3	14.1	77.9	6.7	1.2
Hudson	01410000	296	296	100.0	6.4	91.2	2.0	0.3
Hull	01420000	114	107	93.9	0.0	91.8	8.4	0.0
Innovation Academy Charter (District)	04350000	Non-RTTT Commonwealth Charter School – Not required to report						
Ipswich	01440000	179	171	95.5	12.3	86.0	1.8	0.0
KIPP Academy Boston Charter School (District)	04630000	Non-RTTT Commonwealth Charter School – Not required to report						
KIPP Academy Lynn Charter (District)	04290000	Did not implement						
King Philip	06900000	155	9	5.8	-	-	-	-
Kingston	01450000	76	76	100.0	3.9	93.4	2.6	0.0
Lanesborough	01480000	29	28	96.6	17.9	78.6	3.6	0.0
Lawrence	01490000	1,317	1,285	97.6	14.9	71.1	11.4	2.6
Lawrence Family Development Charter (District)	04540000	Non-RTTT Commonwealth Charter School – Not required to report						
Lee	01500000	86	19	22.1	0.0	89.5	10.5	0.0
Leicester	01510000	132	79	59.8	7.6	87.3	3.8	1.3
Lenox	01520000	91	89	97.8	1.1	98.9	0.0	0.0
Leominster	01530000	538	260	48.3	1.2	98.8	0.0	0.0
Leverett	01540000	28	17	60.7	-	-	-	-
Lexington	01550000	690	352	51.0	0.0	97.4	2.6	0.0
Lincoln	01570000	156	83	53.2	0.0	96.4	3.6	0.0
Lincoln-Sudbury	06950000	166	25	15.1	20.0	72.0	8.0	0.0
Org Name	Org Code	# of Educators to be Evaluated	# Evaluated	% Evaluated	% Exemplary	% Proficient	% Needs Improvement	% Unsatisfactory
Littleton	01580000	132	103	78.0	8.7	87.4	3.9	0.0
Longmeadow	01590000	278	278	100.0	24.8	73.4	1.8	0.0
Lowell	01600000	1,175	1,140	97.0	4.4	89.3	5.9	0.4
Lowell Collegiate Charter School (District)	35030000	Non-RTTT Commonwealth Charter School – Not required to report						
Lowell Community Charter Public (District)	04560000	61	55	90.2	36.4	50.9	10.9	1.8
Lowell Middlesex Academy Charter (District)	04580000	18	18	100.0	83.3	16.7	0.0	0.0
Ludlow	01610000	277	162	58.5	9.9	87.7	1.9	0.6
Lunenburg	01620000	127	126	99.2	13.5	84.9	1.6	0.0
Lynn	01630000	1,203	901	74.9	3.2	82.2	13.8	0.8
Lynnfield	01640000	208	100	48.1	0.0	92.0	7.0	1.0
MATCH Charter Public School (District)	04690000	43	43	100.0	7.0	76.7	16.3	0.0
MATCH Community Day Charter Public School (District)	04650000	28	28	100.0	14.3	64.3	17.9	3.6
Ma Academy for Math and Science	04680000	12	12	100.0	75.0	25.0	0.0	0.0
Malden	01650000	537	506	94.2	2.6	90.3	6.9	0.2
Manchester Essex Regional	06980000	150	146	97.3	19.2	77.4	3.4	0.0
Mansfield	01670000	367	194	52.9	9.8	83.0	7.2	0.0
Marblehead	01680000	318	306	96.2	0.0	98.4	1.6	0.0

Org Name	Org Code	# of Educators to be Evaluated	# Evaluated	% Evaluated	% Exemplary	% Proficient	% Needs Improvement	% Unsatisfactory
Marblehead Community Charter Public (District)	04640000	Non-RTTT Commonwealth Charter School – Not required to report						
Marion	01690000	44	43	97.7	16.3	81.4	2.3	0.0
Marlborough	01700000	440	432	98.2	5.3	89.8	4.9	0.0
Marshfield	01710000	394	382	97.0	5.5	94.0	0.5	0.0
Martha's Vineyard Charter (District)	04660000	30	16	53.3	-	-	-	-
Martha's Vineyard	07000000	99	99	100.0	9.1	84.8	6.1	0.0
Martin Luther King Jr. Charter School of Excellence (District)	04920000	49	45	91.8	15.6	82.2	20.0	2.2
Masconomet	07050000	179	35	19.6	0.0	82.9	14.3	2.9
Mashpee	01720000	159	159	100.0	8.2	84.3	7.5	0.0
Massachusetts Virtual Academy at Greenfield Commonwealth Virtual School	39010000	Did not implement						
Mattapoisett	01730000	50	48	96.0	2.1	97.9	0.0	0.0
Maynard	01740000	133	57	42.9	14.0	80.7	3.5	1.8
Medfield	01750000	248	134	54.0	3.7	91.8	3.7	0.7
Medford	01760000	463	294	63.5	11.6	78.9	8.8	0.7
Medway	01770000	207	188	90.8	9.6	86.2	3.7	0.5
Meiose	01780000	306	278	90.8	1.8	74.5	23.4	0.4
Mendon-Upton	07100000	192	185	96.4	2.2	94.1	3.8	0.0
Metuen	01810000	567	380	67.0	0.5	97.4	2.1	0.0
Middleborough	01820000	275	149	54.2	6.7	86.6	6.7	0.0
Middleton	01840000	83	50	60.2	0.0	94.0	2.0	4.0
Milford	01850000	388	291	75.0	2.1	92.8	5.2	0.0
Milbury	01860000	152	152	100.0	5.3	93.4	1.3	0.0
Millis	01870000	119	117	98.3	11.1	85.5	3.4	0.0
Org Name	Org Code	# of Educators to be Evaluated	# Evaluated	% Evaluated	% Exemplary	% Proficient	% Needs Improvement	% Unsatisfactory
Milton	01890000	341	80	23.5	-	-	-	-
Minuteman Regional Vocational Technical	08300000	105	75	71.4	1.3	90.7	8.0	0.0
Mohawk Trail	07170000	Did not implement						
Monomoy Regional School District	07120000	219	218	99.5	9.2	89.9	0.9	0.0
Monson	01910000	105	57	54.3	-	-	-	-
Montachusett Regional Vocational Technical	08320000	127	57	44.9	1.8	87.7	8.8	1.8
Mount Greylock	07150000	67	65	97.0	4.6	92.3	3.1	0.0
Mystic Valley Regional Charter (District)	04700000	Non-RTTT Commonwealth Charter School – Not required to report						
Nahant	01960000	19	9	47.4	-	-	-	-
Nantucket	01970000	155	130	83.9	3.1	89.2	6.2	1.5
Narragansett	07200000	123	110	89.4	10.0	80.0	10.0	0.0
Nashoba	07250000	316	266	84.2	2.3	92.9	4.9	0.0
Nashoba Valley Regional Vocational Technical	08520000	72	70	97.2	5.7	82.9	8.6	2.9
Natick	01980000	453	440	97.1	7.3	90.5	2.3	0.0
Nauset	06600000	167	167	100.0	22.2	76.0	1.8	0.0
Needham	01990000	503	502	99.8	1.0	97.2	1.6	0.2
Neighborhood House Charter (District)	04440000	48	36	75.0	8.3	69.4	22.2	0.0
New Bedford	02010000	1,016	891	87.7	6.8	82.9	7.7	2.5
New Salem-Wendell	07280000	21	16	76.2	0.0	93.8	6.3	0.0
Newburyport	02040000	232	152	65.5	15.1	81.6	3.3	0.0
Newton	02070000	1,358	1,325	97.6	2.4	95.6	1.7	0.3
Norfolk	02080000	83	76	91.6	13.2	84.2	2.6	0.0
Norfolk County Agricultural	09150000	56	20	35.7	0.0	95.0	5.0	0.0
North Adams	02090000	186	150	80.6	5.3	84.0	10.0	0.7
North Andover	02110000	343	337	98.3	5.0	94.7	0.3	0.0
North Attleborough	02120000	341	340	99.7	8.8	88.8	2.1	0.3
North Brookfield	02150000	57	44	77.2	9.1	88.6	2.3	0.0
North Central Charter Essential (District)	04740000	48	44	91.7	52.3	36.4	11.4	0.0
North Middlesex	07350000	315	315	100.0	14.0	85.4	0.3	0.3
North Reading	02170000	235	127	54.0	1.6	98.4	0.0	0.0
North Shore Regional Vocational Technical	08540000	73	63	86.3	3.2	93.7	3.2	0.0
Northampton	02100000	271	254	93.7	11.4	85.8	2.4	0.4
Northampton-Smith Vocational Agricultural	04060000	Did not implement						
Northboro-Southboro	07300000	139	71	51.1	0.0	98.6	1.4	0.0
Northborough	02130000	183	96	52.5	-	-	-	-
Northbridge	02140000	222	216	97.3	5.1	91.7	2.8	0.5
Northeast Metropolitan Regional Vocational Technical	08530000	129	114	88.4	0.9	90.4	6.1	2.6
Northern Berkshire Regional Vocational Technical	08510000	56	29	51.8	10.3	79.3	10.3	0.0
Norton	02180000	225	207	92.0	1.0	96.6	2.4	0.0
Norwell	02190000	190	190	100.0	0.0	95.3	4.2	0.5
Org Name	Org Code	# of Educators to be Evaluated	# Evaluated	% Evaluated	% Exemplary	% Proficient	% Needs Improvement	% Unsatisfactory
Norwood	02200000	336	159	47.3	8.2	83.0	8.8	0.0
Oak Bluffs	02210000	70	66	94.3	4.5	95.5	0.0	0.0
Old Colony Regional Vocational Technical	08550000	70	62	88.6	1.6	91.9	6.5	0.0
Old Rochester	07400000	108	106	98.1	10.4	83.0	6.6	0.0
Orange	02230000	56	34	60.7	0.0	88.2	11.8	0.0
Orleans	02240000	36	34	94.4	17.6	82.4	0.0	0.0
Oxford	02260000	165	165	100.0	25.5	66.7	7.3	0.6
Palmer	02270000	141	136	96.5	2.2	94.9	2.9	0.0
Pathfinder Regional Vocational Technical	08600000	96	52	54.2	1.9	96.2	0.0	1.9
Paulo Freire Social Justice Charter School (District)	35010000	Non-RTTT Commonwealth Charter School – Not required to report						
Peabody	02290000	507	442	87.2	9.3	89.8	0.7	0.2
Pelham	02300000	32	31	96.9	19.4	80.6	0.0	0.0
Pembroke	02310000	242	225	93.0	10.7	88.9	0.4	0.0
Pentucket	07450000	254	163	64.2	7.4	91.4	1.2	0.0
Petersham	02340000	19	19	100.0	-	-	-	-

Phoenix Charter Academy (District)	04930000	40	40	100.0	5.0	75.0	20.0	0.0
Pioneer Charter School of Science (District)	04940000	Non-RTTT Commonwealth Charter School – Not required to report						
Pioneer Charter School of Science II (PCSS-II) (District)	35060000	Non-RTTT Commonwealth Charter School – Not required to report						
Pioneer Valley	07500000	114	106	93.0	2.8	97.2	0.0	0.0
Pioneer Valley Chinese Immersion Charter (District)	04970000	Non-RTTT Commonwealth Charter School – Not required to report						
Pioneer Valley Performing Arts Charter Public (District)	04790000	56	56	100.0	17.9	66.1	16.1	0.0
Pittsfield	02360000	612	491	80.2	0.6	92.3	6.9	0.2
Plainville	02380000	67	67	100.0	-	-	-	-
Plymouth	02390000	771	320	41.5	14.4	82.2	3.4	0.0
Plympton	02400000	28	28	100.0	10.7	89.3	0.0	0.0
Prospect Hill Academy Charter (District)	04870000	142	85	59.9	10.6	64.7	24.7	0.0
Provincetown	02420000	26	23	88.5	26.1	73.9	0.0	0.0
Quabbin	07530000	199	197	99.0	12.2	85.8	2.0	0.0
Quaboag Regional	07780000	113	111	98.2	33.3	62.2	4.5	0.0
Quincy	02430000	837	375	44.8	2.7	94.4	2.7	0.3
Ralph C Mahar	07550000	80	80	100.0	10.0	88.8	1.3	0.0
Randolph	02440000	317	275	86.8	6.2	76.7	16.0	1.1
Reading	02460000	383	376	98.2	19.4	79.3	1.3	0.0
Revere	02480000	619	584	94.3	5.7	90.6	3.4	0.3
Richmond	02490000	27	22	81.5	-	-	-	-
Rising Tide Charter Public (District)	04830000	Non-RTTT Commonwealth Charter School – Not required to report						
River Valley Charter (District)	04820000	Non-RTTT Commonwealth Charter School – Not required to report						
Rochester	02500000	45	44	97.8	2.3	97.7	0.0	0.0
Rockland	02510000	171	29	17.0	10.3	86.2	3.4	0.0
Rockport	02520000	103	60	58.3	0.0	96.7	3.3	0.0
Org Name	Org Code	# of Educators to be Evaluated	# Evaluated	% Evaluated	% Exemplary	% Proficient	% Needs Improvement	% Unsatisfactory
Rowe	02530000	17	11	64.7	0.0	90.9	9.1	0.0
Roxbury Preparatory Charter (District)	04840000	92	91	98.9	11.0	67.0	22.0	0.0
Sabis International Charter (District)	04410000	111	92	82.9	39.1	58.7	2.2	0.0
Salem	02580000	563	473	84.0	0.8	89.6	9.1	0.4
Salem Academy Charter (District)	04850000	51	46	90.2	17.4	69.6	8.7	4.3
Salem Community Charter School (District)	04670000	12	12	100.0	16.7	58.3	25.0	0.0
Sandwich	02610000	260	230	88.5	8.7	83.9	7.0	0.4
Saugus	02620000	247	236	95.5	4.7	91.5	3.8	0.0
Savoy	02630000	9	9	100.0	-	-	-	-
Scituate	02640000	289	254	87.9	8.7	90.6	0.8	0.0
Seekonk	02650000	184	182	98.9	5.5	92.9	1.6	0.0
Seven Hills Charter Public (District)	04860000	65	65	100.0	32.3	64.6	3.1	0.0
Sharon	02660000	315	315	100.0	3.2	95.2	1.6	0.0
Shawshen Valley Regional Vocational Technical	08710000	Did not implement						
Sherborn	02690000	45	29	64.4	3.4	86.2	10.3	0.0
Shrewsbury	02710000	441	228	51.7	1.3	96.9	1.8	0.0
Shutesbury	02720000	26	17	65.4	-	-	-	-
Silver Hill Horace Mann Charter (District)	04770000	40	38	95.0	2.6	97.4	0.0	0.0
Silver Lake	07600000	162	159	98.1	10.7	88.7	0.6	0.0
Smith Leadership Academy Charter Public (District)	04190000	22	21	95.5	14.3	47.6	28.6	9.5
Somerset	02730000	153	153	100.0	2.0	96.7	1.3	0.0
Somerset Berkley Regional School District	07630000	101	101	100.0	1.0	98.0	1.0	0.0
Somerville	02740000	496	483	97.4	9.9	85.3	4.8	0.0
South Hadley	02780000	184	182	98.9	5.5	93.4	1.1	0.0
South Middlesex Regional Vocational Technical	08290000	86	81	94.2	2.5	82.7	14.8	0.0
South Shore Charter Public (District)	04880000	62	62	100.0	12.9	75.8	11.3	0.0
South Shore Regional Vocational Technical	08730000	68	66	97.1	0.0	80.3	16.7	3.0
Southampton	02750000	55	15	27.3	-	-	-	-
Southborough	02760000	146	84	57.5	-	-	-	-
Southbridge	02770000	213	192	90.1	0.5	94.8	2.1	2.6
Southeastern Regional Vocational Technical	08720000	134	132	98.5	3.0	73.5	22.7	0.8
Southern Berkshire	07650000	104	98	94.2	5.1	93.9	1.0	0.0
Southern Worcester County Regional Vocational Technical	08760000	121	114	94.2	6.1	88.6	3.5	1.8
Southwick-Tolland-Granville Regional School District	07660000	179	177	98.9	9.0	87.6	3.4	0.0
Spencer-E Brookfield	07670000	Did not implement						
Springfield	02810000	2,530	2,305	91.1	13.4	74.4	10.0	2.3
Stoneham	02840000	234	122	52.1	3.3	90.2	6.6	0.0
Stoughton	02850000	355	351	98.9	4.8	92.9	2.3	0.0
Sturbridge	02870000	79	78	98.7	-	-	-	-
Sturgis Charter Public (District)	04890000	Non-RTTT Commonwealth Charter School – Not required to report						
Org Name	Org Code	# of Educators to be Evaluated	# Evaluated	% Evaluated	% Exemplary	% Proficient	% Needs Improvement	% Unsatisfactory
Sudbury	02880000	268	267	99.6	13.9	84.3	1.5	0.4
Sunderland	02890000	30	30	100.0	6.7	90.0	3.3	0.0
Sutton	02900000	124	69	55.6	7.2	91.3	1.4	0.0
Swampscott	02910000	216	214	99.1	11.2	87.4	0.9	0.5
Swansea	02920000	194	154	79.4	2.6	93.5	3.2	0.6
Tantasqua	07700000	174	164	94.3	0.6	98.8	0.6	0.0
Taunton	02930000	622	622	100.0	-	-	-	-
Tewksbury	02950000	294	216	73.5	0.0	97.7	2.3	0.0
Tisbury	02960000	57	57	100.0	5.3	94.7	0.0	0.0
Topsfield	02980000	70	38	54.3	21.1	73.7	5.3	0.0
Tri County Regional Vocational Technical	08780000	114	112	98.2	15.2	76.8	8.0	0.0
Triton	07730000	261	254	97.3	6.3	91.3	2.0	0.4

Truro	03000000	21	20	95.2	55.0	40.0	0.0	5.0
Tyngsborough	03010000	167	159	95.2	0.6	98.1	1.3	0.0
UP Academy Charter School of Boston (District)	04800000	35	34	97.1	67.6	26.5	5.9	0.0
UP Academy Charter School of Dorchester (District)	35050000	58	56	96.6	53.6	37.5	8.9	0.0
Up-Island Regional	07740000	69	66	95.7	1.5	92.4	6.1	0.0
Upper Cape Cod Regional Vocational Technical	08790000	71	68	95.8	1.5	97.1	1.5	0.0
Uxbridge	03040000	156	152	97.4	11.8	79.6	8.6	0.0
Veritas Preparatory Charter School (District)	04980000	Non-RTTT Commonwealth Charter School – Not required to report						
Wachusett	07750000	540	496	91.9	22.0	76.6	1.4	0.0
Wakefield	03050000	299	290	97.0	4.8	92.1	3.1	0.0
Wales	03060000	22	21	95.5	0.0	95.2	4.8	0.0
Walpole	03070000	352	325	92.3	1.5	96.0	2.5	0.0
Waltham	03080000	601	577	96.0	12.8	82.3	4.2	0.7
Ware	03090000	112	103	92.0	43.7	53.4	2.9	0.0
Wareham	03100000	283	246	86.9	13.8	80.1	4.9	1.2
Watertown	03140000	273	219	80.2	4.1	93.2	2.3	0.5
Wayland	03150000	266	154	57.9	7.1	90.3	2.6	0.0
Webster	03160000	161	146	90.7	9.6	84.2	4.1	2.1
Wellesley	03170000	511	1	0.2	-	-	-	-
Wellfleet	03180000	26	26	100.0	38.5	61.5	0.0	0.0
West Boylston	03220000	92	55	59.8	1.8	87.3	10.9	0.0
West Bridgewater	03230000	105	105	100.0	7.6	91.4	1.0	0.0
West Springfield	03320000	370	354	95.7	10.5	87.3	2.3	0.0
Westborough	03210000	338	322	95.3	3.1	95.7	0.9	0.3
Westfield	03250000	564	211	37.4	0.5	89.6	9.0	0.9
Westford	03260000	463	445	96.1	6.5	91.2	1.8	0.4
Westhampton	03270000	23	11	47.8	9.1	90.9	0.0	0.0
Weston	03300000	269	262	97.4	15.6	82.8	1.5	0.0
Org Name	Org Code	# of Educators to be Evaluated	# Evaluated	% Evaluated	% Exemplary	% Proficient	% Needs Improvement	% Unsatisfactory
Westport	03310000	160	157	98.1	1.3	97.5	1.3	0.0
Westwood	03350000	322	243	75.5	4.1	95.5	0.4	0.0
Weymouth	03360000	529	409	77.3	7.8	87.3	4.2	0.7
Whately	03370000	24	24	100.0	0.0	91.7	8.3	0.0
Whitman-Hanson	07800000	297	297	100.0	0.0	98.0	2.0	0.0
Whittier Regional Vocational Technical	08850000	132	130	98.5	3.1	90.8	3.8	2.3
Williamsburg	03400000	29	17	58.6	11.8	82.4	5.9	0.0
Williamstown	03410000	43	42	97.7	9.5	88.1	2.4	0.0
Wilmington	03420000	342	245	71.6	3.7	95.1	1.2	0.0
Winchendon	03430000	136	135	99.3	3.7	85.9	9.6	0.7
Winchester	03440000	420	419	99.8	8.4	89.5	1.7	0.5
Winthrop	03460000	182	174	95.6	4.6	90.8	4.6	0.0
Woburn	03470000	433	334	77.1	1.5	95.5	2.7	0.3
Worcester	03480000	2,175	2,169	99.7	11.0	83.1	5.2	0.7
Wrentham	03500000	94	94	100.0	38.3	60.6	1.1	0.0
State Total	00000000	87,923	71,675	81.5	8.1	86.5	4.8	0.5